

4700 Point Fosdick Dr. NW
Gig Harbor, WA 98335

4700 Pt Fosdick Building Office/Medical Space

One of Gig Harbor's premier Class A Office/Medical Buildings on the Market! Perfect for Company Headquarters or upscale users that will benefit from being in a building with many medical tenants. The 4700 Pt. Fosdick Building has excellent ingress/egress to Highway 16, and is directly across the street from the newly developed Uptown Retail Center.



Property Information

- 160,000 SF Building with 25,000 SF of Available Space
 - Floor 1– Suite 108 • 2,300 SF + 1,271 SF Mezzanine
 - Floor 2– Suite 215 • 3,461 SF Divisible to 1,000 SF
 - Suite 216 • 3,146 SF Divisible to 1,000 SF
 - Floor 3– Suite 310 • 6,260 SF Divisible to 1,000 SF (Contiguous Space)
 - Suite 311 • 13,600 SF Divisible to 1,000 SF (Contiguous Space)
- Great Location on Point Fosdick Dr. NW with Easy Access to Highway 16
- Close to Services with Gig Harbor's Uptown Center Directly Across the Street
- Ample Parking Available
- Impressive Entry with Fountain and Open Architecture
- Tenants Benefit by Low Load Factor of 10%
- Generous Tenant Improvement Packages Available
- On-Site Coffee Shop and Pharmacy



All measurements, figures and information are approximate. Source of information deemed reliable, but not guaranteed.

For More Information Call

253-853-3223

Gary Gallinger
Cell: 253-988-3367
gary@HarborRA.com



Seth Fisher
Cell: 253-221-9840
seth@HarborRA.com

4221 Harborview Drive NW #100
Gig Harbor, WA 98332
www.HarborRA.com

FOR LEASE





253-853-3223

- Sales
- Leasing
- Property Management

...your commercial real estate edge.



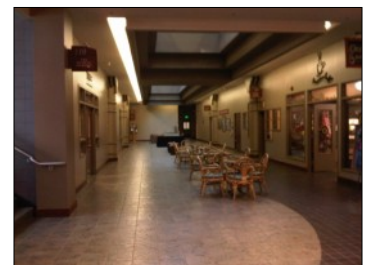
Gary Gallinger
Owner/Broker



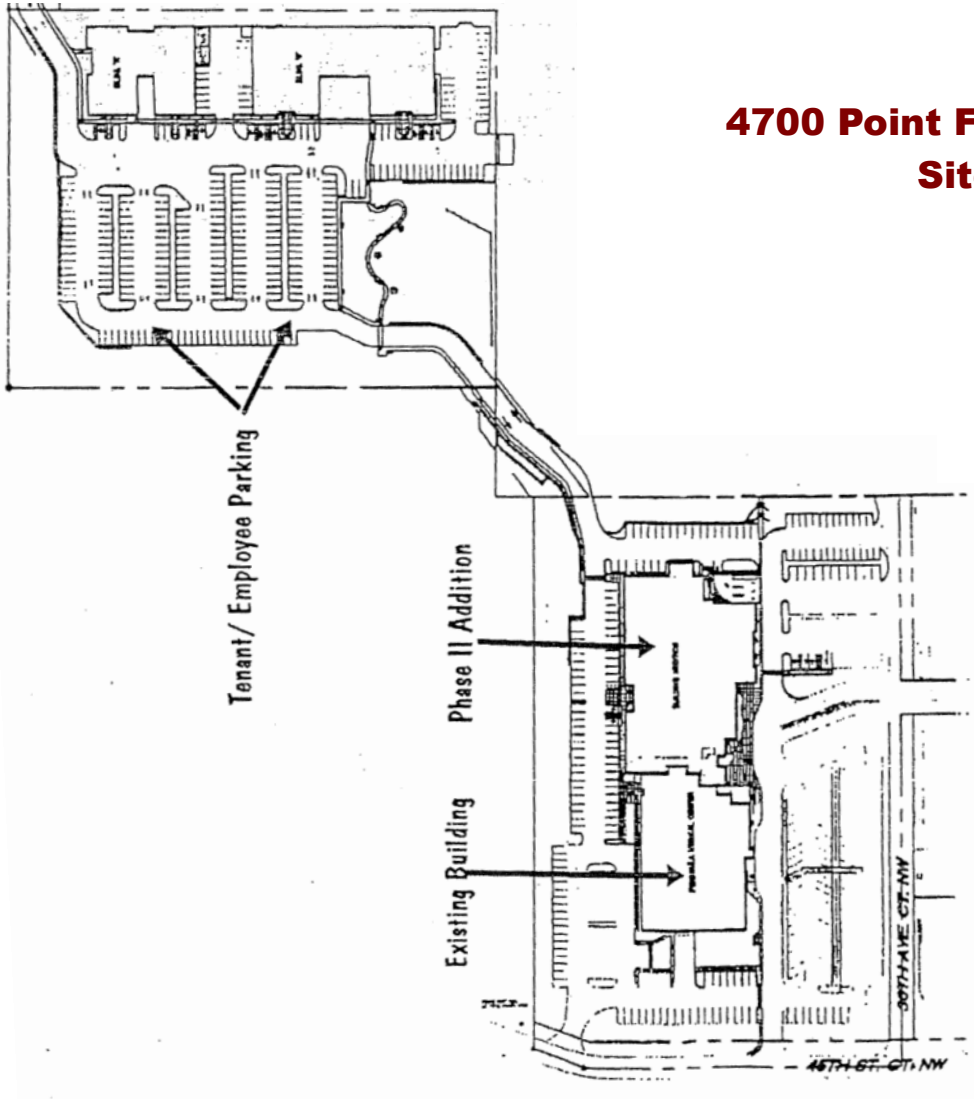
Seth Fisher
Sales & Leasing



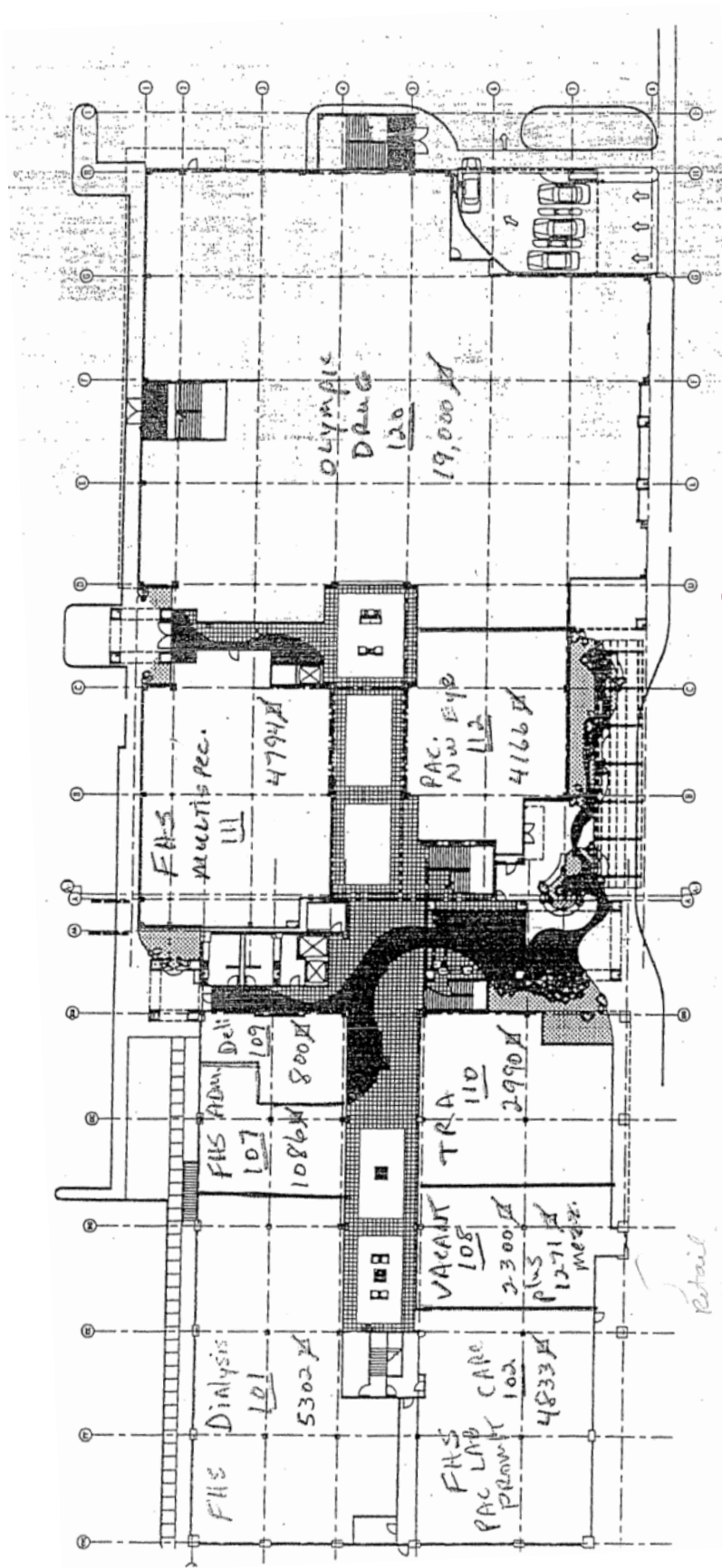
Misha Gallinger
Leasing & Marketing



4700 Point Fosdick Building Site Plan



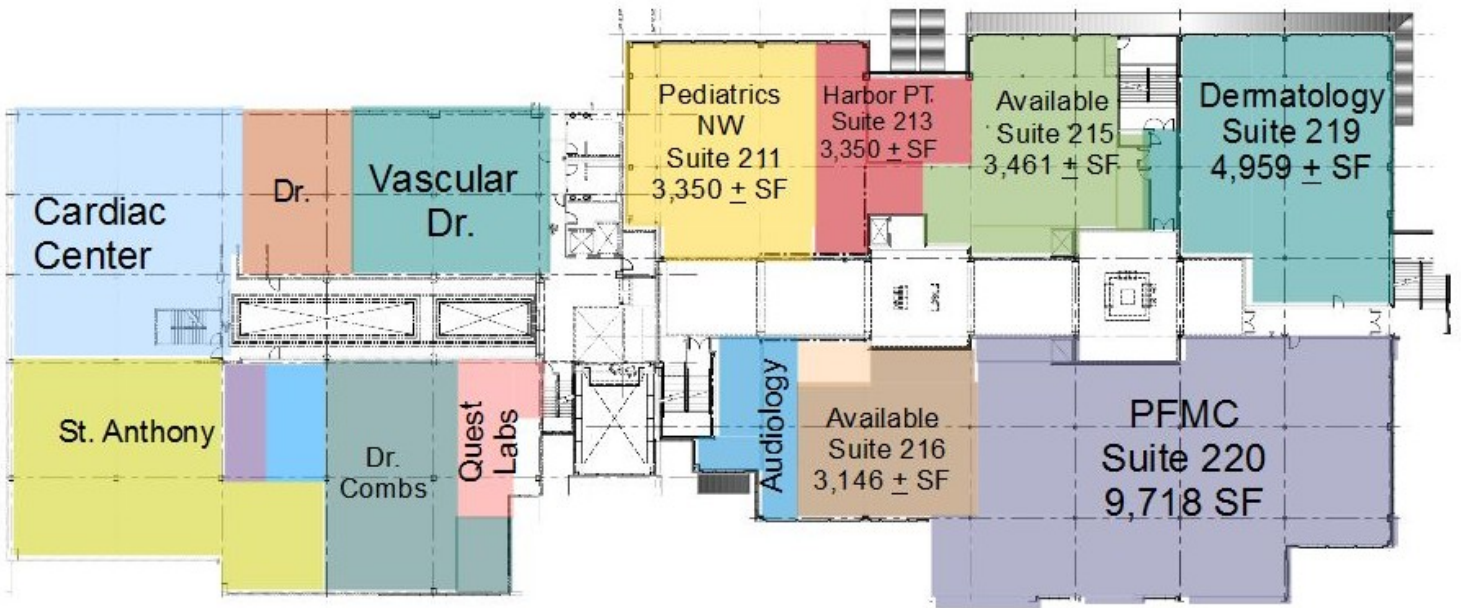
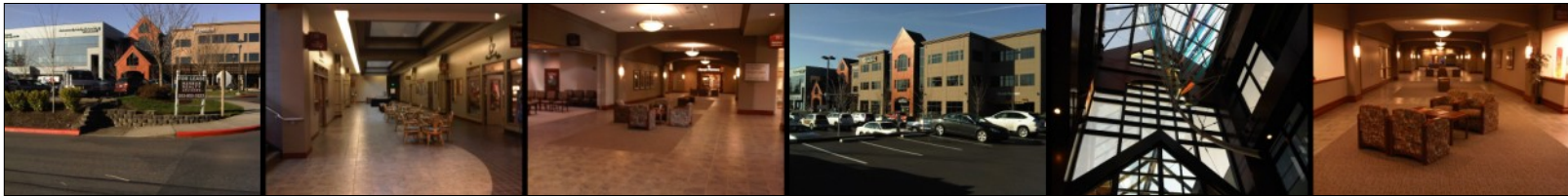
253-853-3223



**4700 Point Fosdick Building
First Floor Plan**



253-853-3223



Second Floor
4700 Point Fosdick Drive NW

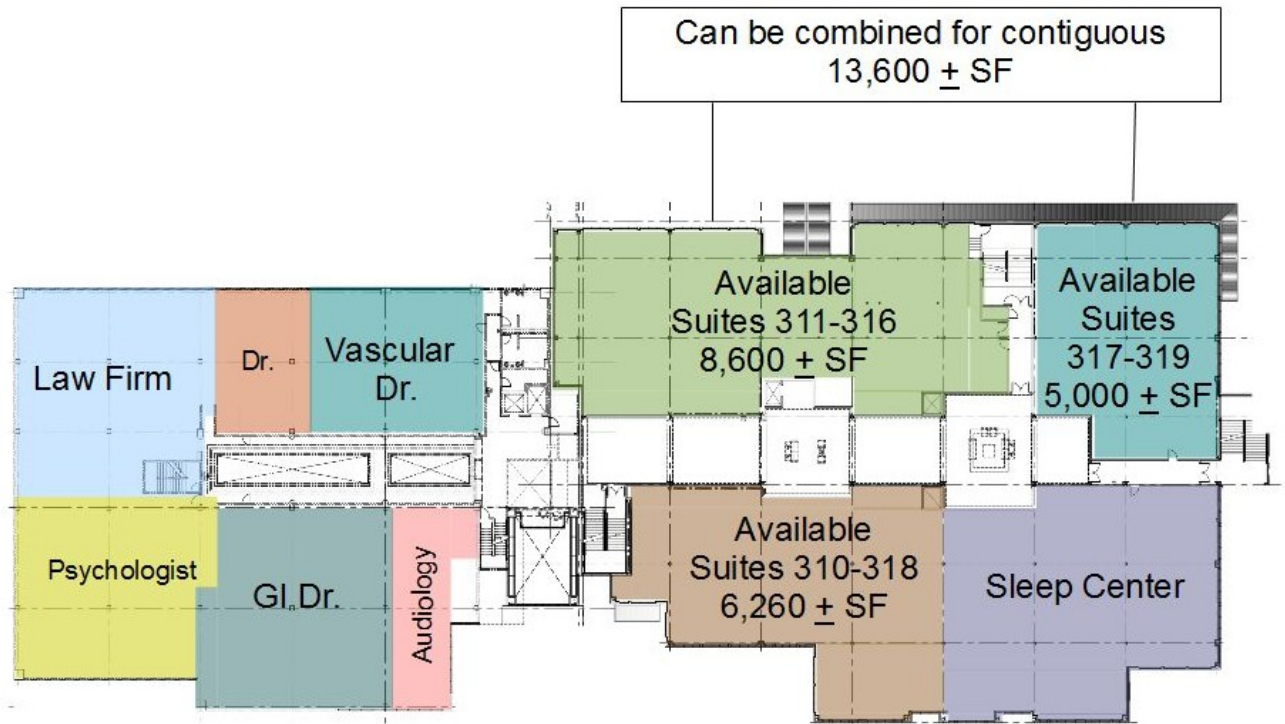
For More Information Call

253-853-3223

Gary Gallinger
Cell: 253-988-3367
gary@HarborRA.com



Seth Fisher
Cell: 253-221-9840
seth@HarborRA.com



Third Floor
4700 Point Fosdick Drive NW

For More Information Call

253-853-3223

Gary Gallinger
Cell: 253-988-3367
gary@HarborRA.com



Seth Fisher
Cell: 253-221-9840
seth@HarborRA.com